

S.M.G.



欧典米黄

**SHAYAN MARBLE GROUP**

[www.shayanquarry.com](http://www.shayanquarry.com)



## INDEX

About Shayan	03
Our Services	04
Shayan History	05
Our Quarry	07
Analysis	11
Our Products	13
Marble Finishes	14
Installation	15
Manufacturing	16



## ABOUT SHAYAN

The Shayan quarry, boasting over 20 quarry steps and an annual extraction of approximately 200,000 tons, holds the top position in extraction among comparable beige marble quarries in the Middle East. Shayan marble is distinguished by its unique monotypic beige color, high shine, minimal water absorption, and enduring qualities. With a history of over 30 years, this quarry stands out as the optimal choice for supplying significant projects. Shayan Marble Group is a leading provider of various natural stone types to customers, including wholesalers, architects, project owners, and construction companies. The company boasts a consolidated capacity, featuring one of the largest beige marble quarries, a white marble quarry, two modern factories equipped with advanced machinery, a showroom, and a dedicated design & project office.

Page No - 03



### Main characters:

Pure beige background  
High apparent density (2700 Kg/m<sup>3</sup>)  
Poor porosity (0.41%) , compact  
Big sizes with few cracks

### Sizes:

Slab ..... (Free size)x2cm  
Tile ..... 120x120x2cm  
Tile ..... 120x60x2cm  
Tile ..... 100x100x2cm  
Tile ..... 80x80x2cm  
Tile ..... 60x60x2cm  
Tile ..... 60x30x2cm

### Finishings:

Polished, Honed, and Brushed

Page No

# SHAYAN HISTORY

" In 2000, Mr. Abolghasem Shafiei established the Shayan Marble Quarry, joined by his business partners Mr. Rasoul Shafiei and Mr. Mansour Najminia. "



**Abolghasem Shafiei**  
Founder



**Rasoul Shafiei**  
Co-Founder



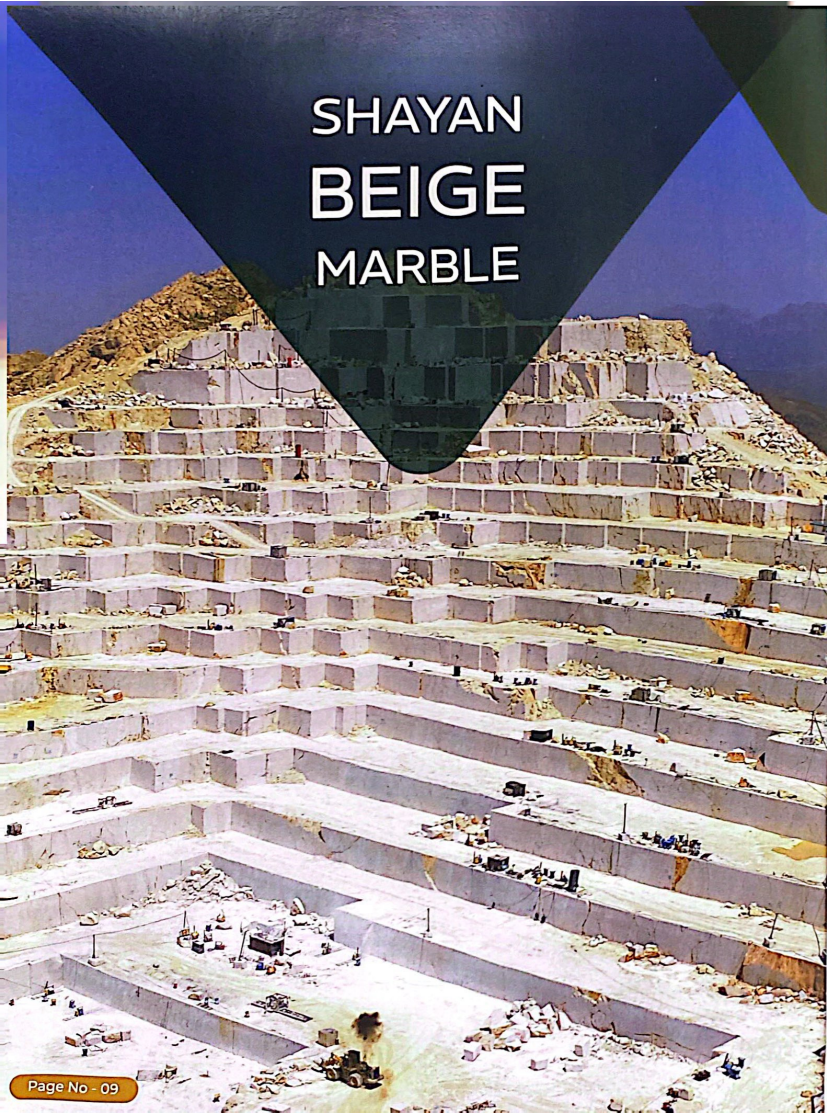
**Mansour Najminia**  
Co-Founder

## Shayan Marble Chemical Characteristics

SiO <sub>2</sub>	0.57 %	Li <sub>2</sub> O	43.46 %
Al <sub>2</sub> O <sub>3</sub>	0.04 %	SO <sub>3</sub>	0.026 %
Fe <sub>2</sub> O <sub>3</sub>	0.41 %	Cl	67 ppm
CaO	54.49 %	Ba	173 ppm
Na <sub>2</sub> O	0.12 %	Sr	221 ppm
K <sub>2</sub> O	0.11 %	Cu	14 ppm
MgO	0.43 %	Zn	15 ppm
TiO <sub>2</sub>	0.006 %	Pb	40 ppm
MnO	0.001 %	Ni	28 ppm
P <sub>2</sub> O <sub>5</sub>	0.085 %	Cr	2 ppm



# SHAYAN BEIGE MARBLE



Page No - 09



## Manufacturing

The fabrication of stone panels can be efficiently completed within a short time frame. These panels can be crafted in tandem with the ongoing work and transported to the site based on your timetable, ready for installation. Serving as a sole supplier, Shayan Marble Group scheduling and production team can assist in keeping client project schedules on course.

## Honeycomb Stone

Our panels are constructed with a laminated composite material structure to ensure extreme strength, low weight, and ductility. They are composed of aluminum in the form of a honeycomb cell core placed between two continuous layers of solid aluminum sheathing. Atop the honeycomb core is a 2-6mm natural stone veneer adhered with a specialized aviation epoxy adhesive. This epoxy is selected for its capacity to withstand 300 MPH winds, high shearing forces, tensile forces, and a broad range of temperature extremes.

Page No - 10

# OUR PRODUCTS

We offer stone panels, which include marbles, travertine, and onyx.



For specific applications requiring custom shapes, our project offices generate the necessary plans and drawings for production. The standard thickness of our stones ranges from 2 to 6mm.

## MARBLE FINISHES

Commercial Series

Dark Wave Series

Light Wave Series

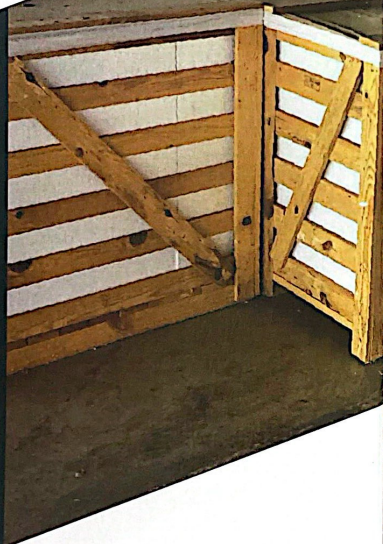
Rice Green Series



# INSTALLATION

Due to its elevated strength and low weight density, the composite panels can be promptly and effortlessly installed by workers. The lightweight nature of the panels enables smaller crews to cover more area swiftly compared to heavy and thick stone cladding materials.

This accelerated installation process reduces the contractor's risks and mitigates costs linked to weather and material damage during construction. Our panels exhibit outstanding impact and crack resistance as they flex without undergoing breakage. They possess exceptional crush strength, stiffness, consistent crush strength, structural integrity, and fatigue resistance. Opting for thicker honeycomb cores will enhance the overall strength even further.



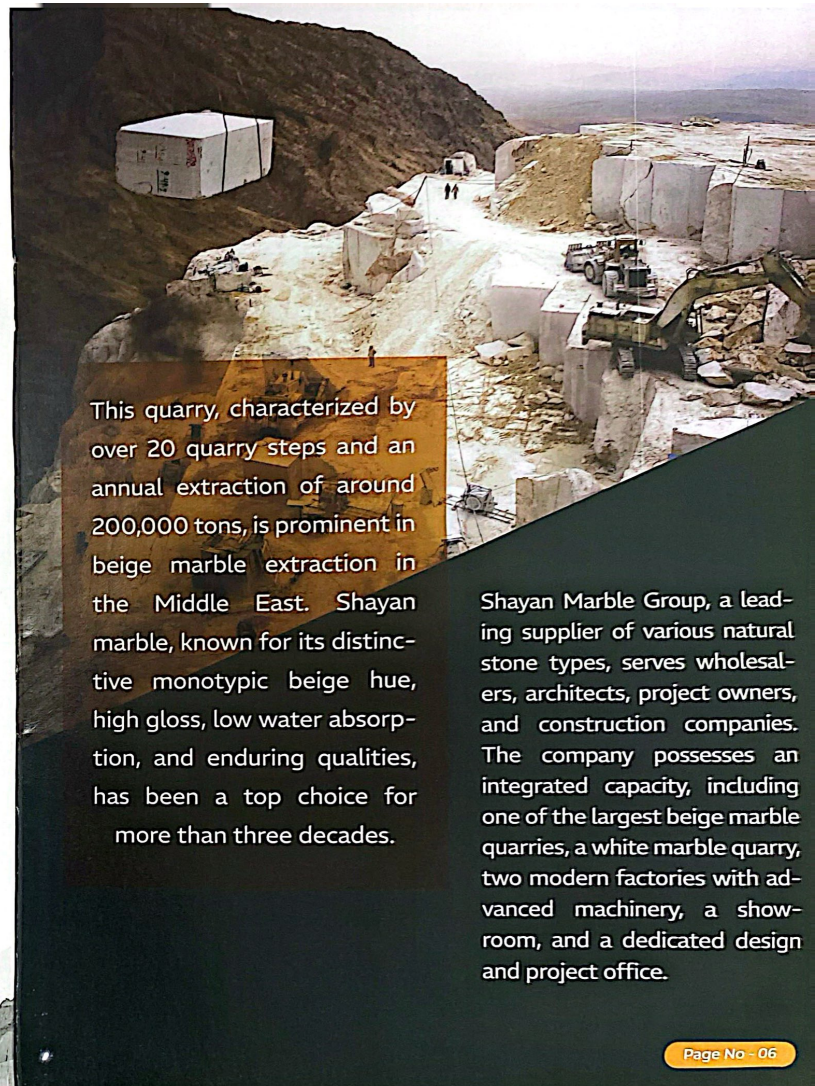
# SHAYAN ANALYSIS

## Shayan Marble Physical Characteristics

Physical characteristics	Test method	Test Results
Apparent density	EN 1936: 2006	2700 kg/m
Open porosity	EN 1936: 2006	0.41 %
Water absorption	EN 1925: 2008	0.15 %
Flexural strength in natural condition	EN 12372: 2006	7.67 MPa
Compressive strength in natural condition	EN 1926: 2006	63.92 MPa

## Determination of Frost Resistance EUROPEAN STANDARDS: EN 12371: 2010 Summary of test results (Average value)

Test items	Test method	Test Results
Flexural strength in natural condition	EN 12372: 2006	7.67 MPa
Flexural strength after 120 cycles freeze/thaw	EN 12371: 2010 - EN 12372: 2006	6.27 MPa
Compressive strength in natural condition	EN 1926: 2006	63.92 MPa
Compressive strength after 120 cycles freeze/thaw	EN 12371: 2010 - EN 1926: 2006	43.87 MPa
Static modulus before testing	EN 14146	19.20 GPa
Static modulus after 120 cycles freeze/thaw	EN 14146	18 GPa
Dynamic modulus before testing	EN 14580	45.44 GPa
Dynamic modulus after 120 cycles freeze/thaw	EN 14580	41.87 GPa



This quarry, characterized by over 20 quarry steps and an annual extraction of around 200,000 tons, is prominent in beige marble extraction in the Middle East. Shayan marble, known for its distinctive monotypic beige hue, high gloss, low water absorption, and enduring qualities, has been a top choice for more than three decades.

Shayan Marble Group, a leading supplier of various natural stone types, serves wholesalers, architects, project owners, and construction companies. The company possesses an integrated capacity, including one of the largest beige marble quarries, a white marble quarry, two modern factories with advanced machinery, a showroom, and a dedicated design and project office.



## OUR QUARRY

---

Shayan Beige Marble

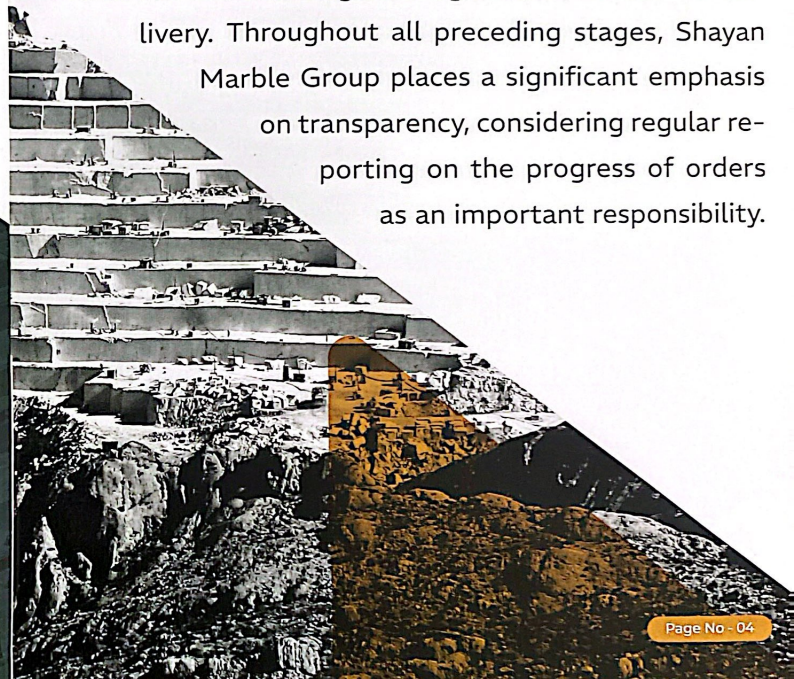


Page No - 07

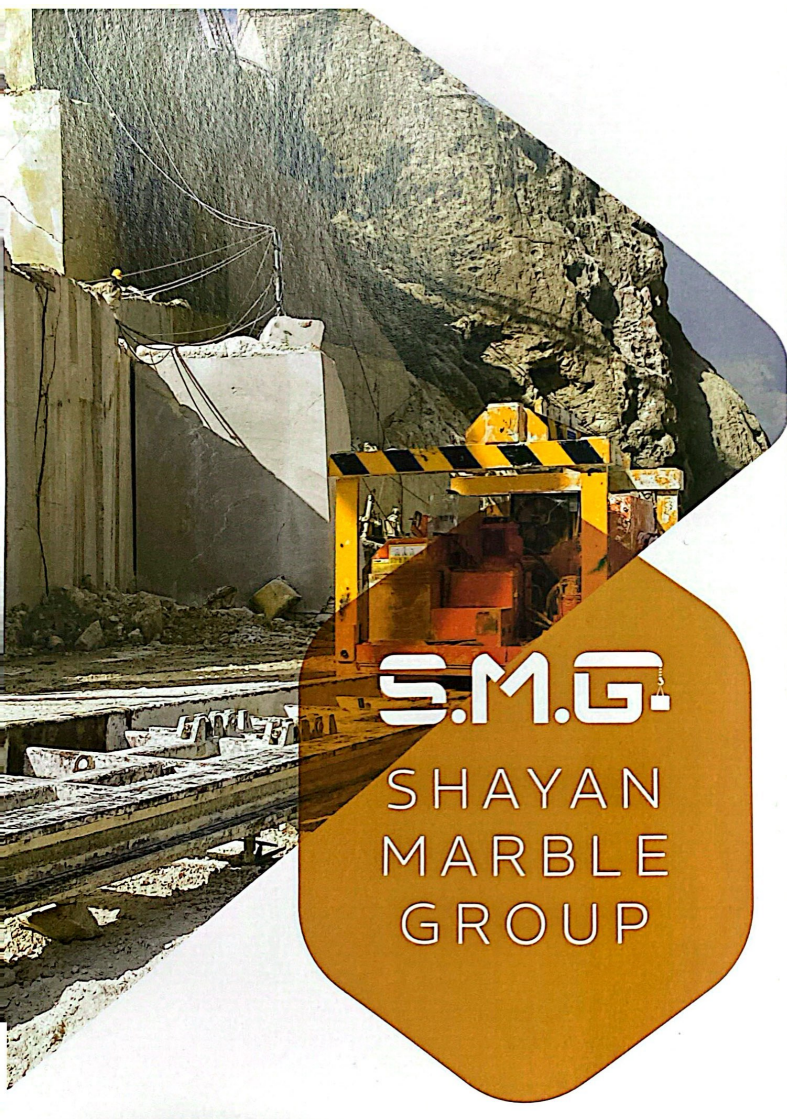
## OUR SERVICES

---

Shayan Marble Group is well-prepared to fulfill the requirements of large-scale projects. Additionally, they offer customized processing by customer orders, along with services such as architectural consulting, application assistance, and global logistics for worldwide delivery. Throughout all preceding stages, Shayan Marble Group places a significant emphasis on transparency, considering regular reporting on the progress of orders as an important responsibility.



Page No - 04





SHAYAN  
**S.M.G.**  
欧典米黄

Scan the QR code to  
add me as a friend



## GET IN TOUCH

---

No 5, Nasim Shomal St, Sarafranz St,  
Shahid Beheshti St, Tehran - 587657111

**P** : +98 21 8817 8476

**E** : [info@shayanquarry.com](mailto:info@shayanquarry.com)

**w** : [www.shayanquarry.com](http://www.shayanquarry.com)